

MXM1055 MXM1205

(with optional EFI™ Fiery® Print Server)



PRO SERIES MONOCHROME DOCUMENT SYSTEMS



(with optional
EFI™ Fiery®
Print Server)



"Outstanding Achievement in Innovation"
EFI Fiery Command WorkStation Integration

SHARP®

Be Original.

Sharp's new Pro Series Monochrome Document Systems
rise above the rest with elevated productivity.

PROFESSIONAL RESULTS WITH UNSURPASSED FLEXIBILITY

The **MXM1055** and **MXM1205 HIGH PERFORMANCE MONOCHROME DOCUMENT SYSTEMS** are the latest additions to the Sharp Pro Series light production lineup. Built on award-winning technology, these models add advanced workflow capabilities with EFI's latest Fiery platform that helps set the bar for the ultimate in efficiency and operation. The new **Fiery Print Server MXPE11** provides in-plants and **Central Reprographics Departments (CRD)** with the advanced workflow capabilities they expect.

Key Features

- **LARGE, HIGH-RESOLUTION 15.4" COLOUR TOUCHSCREEN** display with **swing out keyboard and touch pad** streamlines operation and job management.
- **TRIPLE-AIR PAPER FEED UNITS** combined with the **Print Engine Paper Catalogue (PEPC)** offer a wide range of paper types to be utilized with high precision and reliability.
- **THE NEW POWERFUL FIERY PRINT SERVER** is available for advanced workflows and high productivity. **Command WorkStation** is fully integrated with the Sharp touchscreen for unmatched control and ease-of-use.

The **MXM1055** and **MXM1205** also support **Sharp OSA®** technology, which makes integration with network applications and cloud services simple and easy. Sharp's industry-leading security platform incorporates standard 256-bit data encryption and overwrite protection to help safeguard your business's intellectual property. And when it comes time to trade in, a convenient **End-of-Lease** feature can erase all job data and user data.

That's the **SHARP DIFFERENCE**.

Efficiency



PRECISION ENGINEERED FOR HIGH PRODUCTIVITY



LARGE, HIGH RESOLUTION
15.4" (DIAGONALLY
MEASURED) COLOUR
TOUCHSCREEN DISPLAY
WITH INTEGRATED
KEYBOARD AND TOUCH PAD

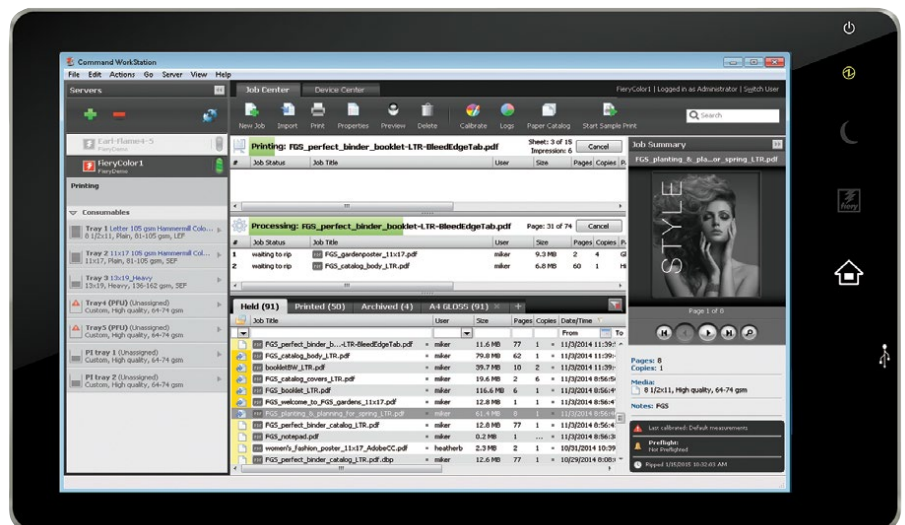
TRIPLE AIR-FEED PAPER
HANDLING OPTION

AVAILABLE
FIERY PRINT
SERVER



Designed and built for print-on-demand environments with world class features that exceed expectations.

- Flexible modular design provides a **wide variety of configurations** from basic high-speed copying and printing to **professional folding** and **booklet making**.
- **Scan Preview** feature offers on-the-fly page editing with easy fingertip navigation.
- **250-sheet Duplex Single Pass Feeder (DSPF)** scans documents at up to 200 images per minute.
- **Triple air-feed** paper handling option offers **high reliability** and is virtually maintenance-free.
- **Print Engine Paper Catalogue (PEPC)** stores up to **1,000 media profiles** to help maintain optimum print quality.
- Up to **13,500-sheet paper capacity** supports media up to **110 lb. cover stock (300 gsm)**.
- Available **5,000-sheet paper stackers** with roll-out carts can be connected in tandem for unattended operation of up to **10,000 sheets**.



15.4" (diagonally measured) display with full access to Fiery Command WorkStation enables an integrated solution.

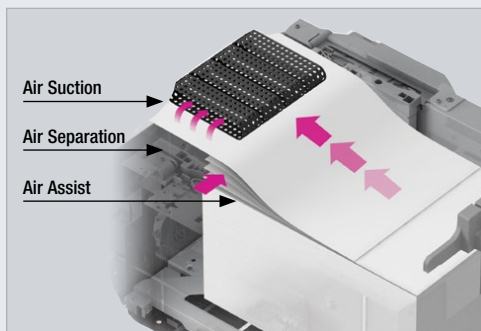
- With an **MXPE11 Fiery Server**, the **Sharp Pro Series Monochrome Document Systems** become a powerful integrated solution for managing high-volume, CRDs and in-plants.
- Standard high-performance print controller with included **PCL®6** and **true Adobe® PostScript®3™**.
- True **1200 x 1200 dpi** printing provides beautiful images and enhanced clarity for fine details such as small text and graphics.
- Standard **Job Management** features make it easy to print on-demand as well as view jobs, retain jobs, combine jobs, select print settings and more.
- Supports the **Sharp OSA development platform**, enabling businesses to easily integrate with network applications and cloud services.
- Convenient **End-of-Lease feature** can erase all files on the hard disk drive, all user data, job status data and address book data at trade-in time.



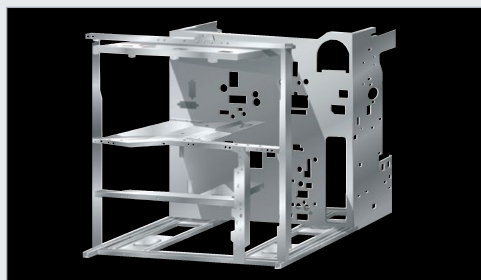
ADVANCED FEATURES HELP ENSURE OPTIMUM RESULTS



Thumbnail preview with intuitive operation simplifies overall job management.



Triple air-feed LCT paper trays maximize reliability and minimize downtime. Pneumatic sensors maintain consistent air flow.



A highly-rigid frame design helps better protect and isolate critical machine components. This also ensures increased reliability and durability in order to withstand heavy use from high-speed and high-volume output.

Precise paper handling with best-in-class reliability.

Production class paper handling with Air-feed Technology

Sharp understands the importance of productivity, that's why the MXM1055 and MXM1205 Pro Series Monochrome Document Systems offer the new **Print Engine Paper Catalogue (PEPC)**, which resides on the print engine and allows up to **1,000 custom paper entries**, giving operators ultimate control when handling the specific characteristics of their preferred paper. Bringing together Sharp's exclusive triple air-feed large capacity tray option with the comprehensive paper catalogue helps ensure precise paper handling and excellent print results on a wide range of media.

Intuitive Job Management

Sharp's Document Filing System provides a 1 TB hard disk drive to store frequently used files. With the **thumbnail preview mode**, **stored jobs can be located and retrieved quickly**. Easily reprint retained jobs, combine jobs, re-paginate jobs, edit pages and more. For environments with critical documents, a redundant back-up hard drive is available.



*Never miss a deadline –
13,500-sheet paper capacity
with options helps keep production
and workflow moving.*



HIGH PERFORMANCE – SUPERIOR IMAGE QUALITY

With an MXPE11 Fiery Server, the Sharp Pro Series Monochrome Document Systems become a powerful integrated solution for managing high-volume, CRDs and in-plants.

- Manage jobs and access the full functionality of **Fiery Command WorkStation®** integrated on the large Sharp touchscreen display.
- Produce documents of the highest image quality possible and inspect jobs before they print with the optional **Fiery ImageViewer**.
- **Process large, complex VDP jobs** fast to maximize throughput and utilize maximum engine capacity.



The MXM1205 shown with Fiery Command WorkStation fully integrated at the control panel. In addition, the MXPE11 Fiery Server includes a touch pad for precise menu navigation.



Improve Productivity

Based on the latest Fiery FS200 Pro system software, the MXPE11 Fiery Server delivers performance - boosting features that **shorten turnaround times** and produce fully finished jobs that stand out and differentiate your business.

Intuitive Centralized Print Job Management

The MXPE11 Fiery Server utilizes Fiery Command WorkStation as a **centralized solution for print job management**. The intuitive and visual interface enables operators to monitor, prepare and troubleshoot jobs for production from multiple client computers or locally from the Sharp Pro Series touchscreen display.

Add Value with the Power of Variable Data

The MXPE11 Fiery Server enables customers to save money by personalizing printing with the built-in, entry-level **Fiery FreeForm™** and with the supported industry-leading **Variable Data Printing (VDP)** formats including PPML and the new PDF/VT-1 and 2 formats.

Produce Exceptional Finished Documents

The MXPE11 Fiery Server offers optional make-ready tools to **streamline job submission**, efficiently perform a wide variety of production tasks and supports imposition of booklets with **Fiery VUE** and **Booklet Maker**. Inspect jobs in the optional Fiery ImageViewer for black and white software. Use the black curve adjustments to improve tonality and ensure high image quality.

Integration with Third Party and Other EFI Solutions

The MXPE11 Fiery Server uses the **Adobe PDF Print Engine (APPE) v3 rendering technology** to offer a native end-to-end PDF workflow. The Fiery open platform also supports industry standards and seamlessly integrates with existing MIS environments, third party vendors and other EFI management information systems to run the printing operation with **increased efficiency**.

The MXM1055 and MXM1205 Pro Series Monochrome Document Systems offer a choice of two high powered print servers to meet the demands of CRDs and in-plants at speeds up to 105 ppm and 120 ppm respectively.

■ High Quality Professional Output

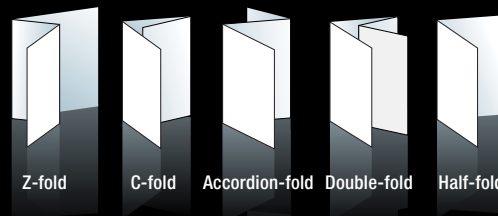
Produce compelling black and white documents with crisp razor-sharp graphics. True 1200 x 1200 dpi resolution helps ensure all your documents will look great every time.

■ Versatile Finishing Options

Two powerful finishing systems are available – a 4,000-sheet stacking finisher with 100-sheet stapling capacity or a 4,000-sheet saddle-stitch finisher, which can produce up to 80-page professional booklets with the available face trimmer unit.

■ Multi-Folding Unit

Provides a variety of folds, including Z-fold, C-fold, Accordion-fold, Double-fold and Half-fold.



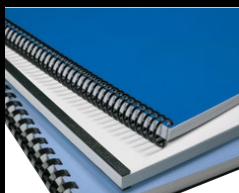
■ Plockmatic Production Booklet Maker System

Produces 120-page professional, square-fold spine booklets in-line at engine speed.



■ GBC® SmartPunch Pro™

Professional punching system produces up to seven commonly used punch styles for creating professional bound booklets.



■ 5,000-Sheet Stacker

For high volume post process jobs, add the 5,000-sheet stacker with standard paper cart. Connect two stackers in tandem (as shown) for unattended output of up to 10,000 sheets.



Versatility

■ Optional MXPE11 Fiery Server

Based on the latest Fiery FS200 Pro system software platform, The Fiery Server delivers performance-boosting features that shorten turnaround times.



■ Post Sheet Inserter

Produce professional looking documents with pre-printed covers and chapter inserts with the available post sheet inserter.

■ Integrated Network Scanning

Sharp's ImageSEND™ feature provides one-touch document distribution. Scans to multiple destinations, including Email, FTP, Network Folder (SMB and Home Directory) and USB.

■ Duplexing Single Pass Feeder (DSPF)

Standard 250-sheet dual head document feeder scans both sides of a document in a single pass at up to 200 images per minute (IPM). This system helps maximize both efficiency and reliability.

■ 15.4" Touchscreen (diagonally measured)

A large, high resolution touchscreen with tablet-style navigation makes it easy to access features. You can also add shortcut keys to popular features, change the key layout or add a custom background theme.

■ 500-Sheet Multi-Bypass

Feeds paper sizes from 5.5" x 8.5" to 12" x 18".

■ Independent Motors

Insulated independent motors run quieter and provide higher reliability.

■ 3,000-Sheet Standard Paper Capacity

Includes 2,000-sheet letter size tandem tray and two 500-sheet letter/legal/ledger size trays. Add optional paper handling accessories for a maximum on-line paper capacity of 13,500 sheets.

■ Construction

Offers increased durability and reliability to withstand heavy use.

■ Convenient Job Management

1 TB hard disk drive provides on-board document storage. An intuitive thumbnail view makes it easy to select, edit, reprint, repaginate and more.

■ Handling

Sharp's advanced 5,000-sheet large capacity paper tray option utilizes triple air-feed technology, which directs air flow with precision accuracy for proper paper handling and enhanced media support up to 300 gsm. Two large capacity trays can be connected in tandem (as shown).



CONFIGURATIONS TO SUIT VIRTUALLY ANY ENVIRONMENT

Versatile and Customizable To Fit Your Needs

The MXM1055/M1205 Pro Series Monochrome Document Systems offer flexible paper handling and finishing options to accommodate any size in-plant or on-demand workflow environment.*



MXM1205 shown with 3,500-sheet large capacity cassette, 100-sheet Staple/Saddle-Finisher and 100-sheet bypass tray.



MXM1205 shown with Curl Correction Unit, Inserter, Multi-Folding Unit, GBC SmartPunch Pro, 100-sheet Staple/Saddle-Stitch Finisher, dual 5,000-sheet large capacity trays, dual 5,000-sheet paper stackers, 500-sheet multi-bypass tray and status indicator.

Modular Options Make It Easy To Build the System of Your Choice

Options for the MXM1055/M1205 enable businesses to choose from several high performance finishing systems that offer up to 100-sheet stapling, professional saddle-stitch booklet making and three-hole punching. More advanced configurations include a square-fold spine Booklet Making System, a professional punching system, high capacity paper stackers, a two-tray inserter, a multi-folding unit and a trimmer unit.

Customize



Multi-Folding Unit

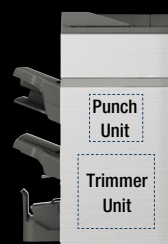
Two-Tray Inserter

MXM1055/M1205 Base Machine

3,500-Sheet Letter LCC



Plockmatic 120-page Production Booklet Maker System



100-Sheet Staple-Saddle Finisher



100-Sheet Staple-Stacking Finisher



GBC SmartPunch Pro™



5,000-Sheet Paper Stacker



5,000-Sheet LCT Air-Feed



500-Sheet Multi-Bypass

*Some options not available in all configurations, see your local dealer.

GET MORE OUT OF NETWORK RESOURCES

Streamline your document workflow and enhance productivity with Sharp OSA technology.

Integrating with Network Applications and Cloud Services Has Never Been So Easy

With standard Application Communication and External Accounting modules, the MXM1055/M1205 Pro Series Monochrome Document Systems offer **powerful document workflow capabilities** to help businesses leverage their network infrastructure, cloud-enabled services and more.* While others are limited to a small circle of productivity, the **Sharp OSA** development platform allows businesses to leverage the power of their network applications, back-end systems, even cloud-enabled services, right from the touchscreen panel of this new series.

Save Time, Increase Efficiency

You'll save time and increase the efficiency of everyday tasks with Sharp OSA technology because it can be virtually seamless to the user. Any MXM1055/M1205 anywhere in the organization can display choices that were once only available on a desktop PC. With **one-touch access** to business applications via Sharp OSA integration, you can start and finish a document distribution task without worry.

**Some features require optional equipment.*

Customized Integration

Sharp OSA technology also provides **powerful customization**. With the ability to personalize applications and processes specific to your business, Sharp OSA technology can help eliminate redundancy and **streamline workflow**, helping to save time and **optimize productivity**. The latest version of Sharp OSA technology can reach beyond the firewall, enabling cloud-based applications over the Internet. And since Sharp OSA technology utilizes industry-standard programming languages and web APIs, third party software developers can deliver customized solutions to your business faster than ever.



ADVANCED DEVICE MANAGEMENT TOOLS MAXIMIZE EFFICIENCY

The MXM1055/M1205 Pro Series Monochrome Document Systems enhance operational efficiency through versatile device management.

Sharp Device Management Suite

Sharp's suite of intelligent tools deliver unparalleled control over the administration of Sharp MFPs. All MFPs and printers in your network can be managed and monitored effortlessly to maximize uptime and ensure the flow of important business communications.

Sharp Remote Device Manager (SRDM)

With **SRDM**, administrators can easily view detailed information on each device such as consumable levels, network connectivity and click counts. Advanced features such as **Remote Front Panel** allow administrators and support personnel to view and control the LCD panel of the machine remotely from any PC on the network. Plus, with event-driven service alerts, administrators and supervisors can achieve higher productivity. Now it is easier than ever to monitor the status of MFPs.

Printer Status Monitor

Sharp's Printer Status Monitor makes it easy for an end user to view printer conditions, check paper and toner levels, and more all through a simple interface.

Embedded Web Page

Experience the convenience of Sharp's Embedded Web Page right from your desktop. This advanced web-based management tool allows users to create and manage their own network scanning destinations, profiles and web-links. Administrators can access device settings, account information and security settings.

Take Charge of Usage and Costs

Through Sharp's **Embedded Web Page**, administrators and supervisors can define User Groups on the MXM1055/M1205 to manage and restrict features such as copying, printing, and scanning. Custom user groups can be easily created to manage page counts. This helps to simplify cost management of imaging. The MXM1055/M1205 can store profiles for up to 1,000 users.

24/7 Training with YourSharp™

Managing all of the advanced features of your Sharp product is simple and easy.

With **YourSharp™**, you get a dedicated customer training website customized to your MXM1055/M1205 and allows you to locate resources and find information specific to your configuration, truly helping you maximize your investment.

your SHARP experience



Remote Front Panel

Remote Front Panel

SAFEGUARD YOUR INTELLECTUAL PROPERTY

PRIVACY

AUTHORIZATION

CONFIDENTIALITY

PROTECTION



Sharp's Standard Key Security Features at a Glance

- 256-Bit Data Encryption
- Up to 10 times Data Overwrite Protection
- Group Account Management for up to 1,000 Users
- Confidential Printing
- Port Management
- IP/MAC Address Filtering

Innovative document and device protection helps ensure confidentiality.

To help protect your data, the MXM1055/M1205 offers several layers of **Standard Security**, making Sharp the optimum choice to help protect employees' privacy and intellectual property. As a leader in office equipment security, Sharp makes it easy for virtually any business or government entity to safely deploy digital copying, printing and scanning.



Data Encryption and Overwrite

To help protect your data, the MXM1055/M1205 can encrypt document data using **AES** (Advanced Encryption Standard) **256-bit encryption**. The MXM1055/M1205 can also erase the temporary memory on the hard drive by overwriting the encrypted data up to ten times, offering an unprecedented level of assurance. A convenient **End-of-Lease feature** overwrites all data, including the Document Filing area, user data, job status data and address book.



Network Scanning Access Control

To help protect your network from unauthorized Email communications, the MXM1055/M1205 supports **User Authentication**, requiring users to login before performing any network scanning operations.



Authority Groups

Advanced **Account Management** enables administrators to set authority groups for access to features of the MXM1055/M1205. Administrators can control which department, for instance, has full access to copying, printing and/or scanning. Walk-up users enter a code, Local Name and Password, or LDAP User Authentication to access the features assigned to their group.



Control Device Access Over the Network

To help restrict access to the device over the network, the MXM1055/M1205 offers IPsec, SMB and extended support for **TLS Encryption** (Transport Layer Security), **IP/MAC** address filtering, IEEE 802.1x authentication, protocol enable/disable and port management for maximum security.



Documents Remain Confidential

The MXM1055/M1205 offers **Confidential Printing**, which when used, requires users to enter a PIN code in order to print a queued document. To help protect your direct-print documents from unauthorized viewing, the MXM1055/M1205 offers encrypted PDF printing and scanning.



Tracking and Auditing Information

Legislation and industry policies require companies to be more aware of information flow from their offices. Sharp offers both built-in and additional hardware/software which allows users to **control**, **access** and **track usage** of each device on the network.



Data Security Kit (Optional)

For maximum protection, the optional data security kit offers additional features, such as **Data Overwrite on-demand** and at power up, Document Filing access control, **Incorrect Password Lockout** and Restricted Status Display and Restricted List printing.

These scalable security offerings aim to protect your intellectual property, preserve confidential information and help your business to meet regulatory requirements, such as the Personal Information Protection and Electronic Documents Act (PIPEDA).





COMMITTED TO HELPING PROTECT THE ENVIRONMENT



Advanced Energy Saving Features

The MXM1055/M1205 utilizes several energy efficient technologies to minimize power consumption and maximize energy savings.

- An LED exposure lamp reduces power significantly when compared to conventional exposure lamps.
- A customizable seven-day power management scheduler allows businesses to define the days and times when power will be turned on and turned off.
- Sharp's Auto Power Management function allows the device to be set to shut off automatically based on usage trends.
- Sharp's Eco-Scan mode can shut off the fuser when scanning documents, previewing images and other operations.



Sharp's environmental initiatives and dedication to developing energy efficient document systems set a high standard for the industry.

An Environmentally Responsible Approach to Product Design

The MXM1055/M1205 Pro Series Monochrome Document Systems utilize Sharp's advanced **micro-fine toner technology**, which offers a lower consumption rate and produces less waste than conventional toners, resulting in longer replacement intervals. Sharp supplies are packaged using fully **recyclable materials**. Long-life consumable parts help minimize service intervals and downtime, resulting in lower operating costs. With two different energy saving modes, power can be reduced or shut off at set intervals. All Sharp document systems are **ENERGY STAR® qualified** and **RoHS compliant** to restrict the use of hazardous substances. These products also have the lowest **TEC** (Typical Electricity Consumption) value among competitive models. Sharp MFPs are **EPEAT®** registered.

Toner Recycling Program

As part of our commitment to helping preserve the environment, Sharp offers our customers zero-waste-to-landfill recycling for all Sharp consumables, including: cartridges, bottles, toner collection containers and drum units. Sharp encourages customers to recycle their used Sharp toner cartridges in bulk by providing (Prepaid Shipping Labels) for their return to our facility. Please visit <http://www.sharp.ca/support-toner.aspx> to learn more.

Environmental Leadership

As a testament to our commitment to the environment, Sharp is a multi-year winner of the **ENERGY STAR®** annual **Excellence in Energy Proficiency Product Design**. Sharp was also a previous recipient of the *Excellence in Partnership Green Contractor Award* and the **Evergreen Award** from the General Services Administration (GSA) and the Coalition for Government Procurement. These awards recognize environmentally responsible businesses and their efforts on recycling, waste reduction and affirmative procurement practices.

Global Initiatives

Sharp is committed to environmental sustainability and corporate responsibility including: planning, design, manufacturing, distribution and product end-of-life management. For more information about Sharp's environmental leadership including information about energy efficient products, electronics or toner cartridge recycling, please visit <http://www.sharp.ca/about-us-environmental-policy.aspx> to learn more.

MXM1055/M1205 SPECIFICATIONS

Main Specifications

MXM1055/ MXM1205	Base models include: LCD, 250-sheet DSPF, 3,000-sheet paper capacity, 1 TB hard disk drive, PCL6®/Adobe® PostScript® 3™ network printing, colour network scanning, web browser, swing out keyboard, application communication module and external accounting module	
Type	Console, Monochrome multi-function digital document system	
Display	15.4" (diagonally measured) colour dot matrix high-resolution touch panel tilting display. 1280 x 800 dots (WXGA)	
Functions	Copy, print, network print, network scan and document filing ¹	
Copy System	Dry electrostatic transfer/Dual component developer/Magnetic brush development/OPC/white LED exposure/heat roller fusing	
Originals	Sheets and bound documents	
Max Original Size	11" x 17"	
Copy Size	Min. 5.5" x 8.5", Max. 11" x 17" + 12" x 18"	
Copy Speed	105/120 ppm (8.5" x 11")	
Multiple Copy	Max. 9999 copies	
First Copy Time (in Seconds)²	MXM1055	MXM1205
	Platen Glass	3.2
	DSPF	5.5
Warm-Up Time	210 seconds ²	
Magnification	25% to 400% in 1% increments (with document feeder 25%-200%)	
Original Feed	250-sheet DSPF	
Scan Speed	DSPF Scan: Up to 200 IPM ² (Monochrome or Colour)	
Original Sizes	5.5" x 8.5", 8.5" x 11", 8.5" x 11" R, 8.5" x 14", 11" x 17" Std. 3,000 Sheets/Max. 13,500 Sheets	
Paper Capacity	Standard: Tandem Tray 1 - 1200 sheets (letter size), Tandem Tray 2 - 800 sheets (letter size), Trays 3/4 - 500 sheets ea. (letter/legal/ledger/statement/12" x 18"). Optional: Multi-bypass Tray (for machine) - 100 sheets (letter/legal/ledger/statement/12" x 18"), Multi-bypass (for LCT) - 500 sheets (letter/legal/ ledger/statement/12" x 18"), LCT (2-Drawer) - 2,500-sheets each drawer (letter/legal/ ledger/12" x 18"), Letter LCC - 3,500 sheets (letter).	
Paper Weights and Types	Tandem Trays - 16-28 lb. bond, Trays 3/4 - 16 lb. bond to 100 lb. Bristol, Multi-bypass Tray (for machine) - 15 lb. bond to 110 lb. cover, Multi-bypass Tray (for LCT) - 15 lb. bond to 100 lb. Bristol, LCT (2-drawer) - 15 lb. bond to 110 lb. cover, Letter LCC - 16 lb. bond to 110 cover ² . Supported paper types include thin, plain, recycled, colour, letterhead, pre-printed and pre-punched and glossy.	
Duplexing	Standard automatic duplex copying and printing	
CPU	Up to 1.8 GHz Multi-Processor Controller	
Interface	RJ-45 Ethernet (10/100/1,000 Base-T), USB 2.0 (2 host ports, front and rear), USB 2.0 (1 device port)	
Memory	Standard 5 GB	
Hard Disk Drive	1 TB	
Copy Resolution	Scan: 1200 x 1200 dpi / 600 x 600 dpi	
Copy Modes	Monochrome/Greyscale	
Exposure	Modes: Text, Text/Printed-Photo, Printed-Photo, Text Photo,	
Control	Photo, Map, Pale-Colour. Settings: Auto or 9 step manual	
Halftone	256 gradations/2 levels (monochrome)	
Copy Features	Electronic sort, Auto Paper Selection (APS), Auto Magnification Selection (AMS), image preview/edit, auto tray, paper type selection switching, rotate copy, reserve copy, tandem copy, book copy, margin shift, edge/centre erase, book divide, dual page, cover/insert page, OHP insert, job build, card shot, blank page skip, mirror/B/W reverse, proof, pamphlet, watermark, custom image, job programs.	
Account Control	Up to 1,000 users. Supports user-number authentication (on device), login name/password or login name/ password (via LDAP server) for Copy, Print, Scan and document management.	
Firmware Management	Flash ROM with local (USB), network update capability and firmware update 1 to N with SRDM (Sharp Remote Device Management)	
Configuration Method	Web-based management with user/administrator level login, cloning (1 to N) with SRDM and remote front panel access	
Service/ Functions	Remote front panel, remote access to service logs and click counts	
Accessibility Features	Tilt Front Panel, Adjustment of Key Touch, Document Feeder Free Stop, Job Programs, Remote Front Panel, Universal Grip for Paper Trays, and Disable Screen Timeout	

¹ Some features require optional equipment. See your local dealer.

² Specification may vary depending on product configuration, machine settings and operating conditions.

Environmental Standards	International ENERGY STAR Program Ver. 2.0, Law on Promoting Green Purchasing, European RoHS (Restriction of Hazardous Substances)
Power Source	AC 208-240 VAC, 60 Hz, 15 Amps
Power Consumption	Maximum: 3.5 kW or less
Weight	Approx. 661 lbs.
Dimensions	Approx. 45" (w) x 30.5" (d) x 60.25" (h)

Network Printing System (Standard)

PDL	PCL6 compatible, True Adobe, PostScript 3, optional XPS
Resolution	1200 x 1200 dpi
Print Speed	105/120 pages per minute (8.5" x 11")
Print Drivers	Windows® Server® 2008-2012, Windows Server 2008-2012 x64, Windows 7, Windows 7 x64, Windows 8, Windows 8 x64, Windows 8.1, Windows 8.1 x64, Windows 10, Windows 10 x64, MAC OSX (including 10.4-10.11)

Features	Auto configuration, continuous printing, electronic sorting, N-up printing, duplex printing, transparency inserts, margin shift, image rotation, different cover page, poster print, job bypass print, job retention, confidential print, proof print, user authentication, image stamp and watermarks. Additional features: Multiple pamphlet print, network tandem print, carbon copy print mode, different cover page/ last page/other page, form overlay, tab paper settings, tab printing, chapter inserts and page Interleave ¹
-----------------	--

Direct Printing	File Types: TIFF, JPEG, PCL, PRN, TXT, PDF, Encrypted PDF, Compressed PDF/A1, PostScript and Windows XPS ¹ . Methods: FTP, Web page, Email, Network Folder and USB
------------------------	---

Resident Fonts	80 outline fonts (PCL), 139 fonts (PS)
Interface	RJ-45 Ethernet 10/100/1,000 Base-T, USB 2.0
Operating Systems	Windows Server 2008-2012, Windows 7, Windows 8/8.1, Windows 10, MAC OSX (10.4-10.11), Unix®, Linux®, and Citrix® XenApp

Network Protocols	TCP/IP (IPv4, IPv6, IPSEC) SSL (HTTP, IPP, FTP), SNMPv3, SMTP, POP3, LDAP, 802.1x for Windows and Unix. LPD and LPR for Unix. IPX/SPX® for Novell environments and EtherTalk®. AppleTalk® for Macintosh® environments. ¹
--------------------------	---

Printing Protocols	LPR, IPP, IPPS, PAP, Raw TCP (port 9100), FTP and Novell Pserver/Rprinter
Network Security	IP/MAC address filtering, protocol filtering, port management, user authentication and document administration. ¹

Security Standards	IEEE-2600™-2008, DoD (NSTISSP) #11, DoD Directive 8500.2, DoD (DISA)
---------------------------	--

Network Scanning System (Standard)

Scan Modes	Standard: Colour, monochrome, greyscale
Max. Original Size	11" x 17"
Optical Resolution	600 dpi
Output Modes	600 dpi, 400 dpi, 300 dpi, 200 dpi, 150 dpi, 100 dpi
Image Formats	Monochrome: TIFF, PDF, Encrypted PDF, XPS, PDF/A Colour/Greyscale: Colour TIFF, JPEG, PDF, Encrypted PDF ¹ , PDF/A ¹ , Compressed PDF ¹ , XPS ¹

Image Compression	Monochrome Scanning: Uncompressed, G3 (MH), G4 (MR/MMR) Colour/Greyscale: JPEG (high, middle, low)
Scan Destinations	Email, Desktop, FTP, Folder, (SMB), USB

One-touch Destinations	Up to 2,000 (combined scan destinations)
-------------------------------	--

Group Destinations	Up to 500
---------------------------	-----------

Programs	48 (combined)
-----------------	---------------

Max. Jobs	Up to 100
------------------	-----------

Network Protocols	TCP/IP and TLS (includes: HTTP, SMTP, LDAP, FTP, POP3), SMB, ESMTD and 802.1x.
--------------------------	--

Network Security	Email server user authentication for LDAP and Active Directory
Sharp OSA Platform	Application Communication Module (MXAMX2) and External Accounting Module (MXAMX3) standard

MXPE11 Fiery Server

Server	Type External Server
System Software	Fiery FS200 Pro
CPU Type	Intel® Pentium® Processor G1820
CPU Speed	2.7 GHz
Memory	4 GB RAM
Hard Disk Drive	500 GB
Operating System	Windows® Embedded 8.1 Pro

Network Conn.	RJ-45 10/100/1000 Base-T
Power Source	100-240 VAC, 50/60 Hz, 3A
Power Consumption	Typical: 75w/ Maximum: 180w
Dimensions	Approx. 5.5" (w) x 15.5" (d) x 12.5" (h)
Weight	Approx. 15 lbs.

4K 100-Sheet Stapler/Finisher (MXFN21: option)

Type	4,000-sheet console stapler finisher (100-sheet stapling)
Output Trays	Upper tray: Moving offset tray (up to 1,500 letter size sheets) Middle tray: 250 sheets (letter size, non-stapled) Lower tray: Moving offset tray (up to 2,500 letter size sheets)

Stapling Capacity	Up to 100 sheets (letter/statement)
Stapling Media	Plain paper, letter/legal/ledger size or mixed
Stapling Positions	1 front, 1 rear, or 2 point stitching
Hole Punching	Optional three-hole punch unit MXPX13B
Power Source	120 VAC, 60 Hz, 15 Amps
Power Consumption	200w/350w with MXFD10
Weight	Approx.: 134.5 lbs.
Dimensions	Approx.: 35.25" (w) x 30" (d) x 41" (h) (with tray extended)

4K 100-Sheet Stapler/Saddle Stitch Finisher (MXFN22: option)

Type	4,000-sheet console stapler finisher (100-sheet stapling)
Output Trays	Upper tray: Moving offset tray (up to 1,500 letter size sheets) Middle tray: 250 sheets (letter size, non-stapled) Lower tray: Moving offset tray (up to 2,500 letter size sheets)

Stapling Capacity	Up to 100 sheets (letter/statement)
Stapling Media	Plain paper, letter/legal/ledger size or mixed
Stapling Positions	1 front, 1 rear, or 2 point stitching
Saddle-Stitch	Centre stitch/centre fold (2 staples) letter/legal/ledger paper sizes

Saddle-Stitch Max. Sets	Up to 5 sets (16-20 sheets/10 sets (11-15 sheets per set)/ 15 sets (6-10 sheets per set)/25 sets (1-5 sheets per set)
Hole Punching	Optional three-hole punch unit MXPX13B
Power Source	120 VAC, 60 Hz, 15 Amps
Power Consumption	200w/350w with MXFD10
Weight	Approx. 134.5 lbs.
Dimensions	Approx. 35.25" (w) x 30" (d) x 41" (h) (with tray extended)

Optional Equipment

MXCF11	2-Tray Inserter Unit ¹
MXFD10	Multi-folding Unit ¹
MXLC12	3,500-sheet Large Capacity Cassette (letter) ¹
MXLC13N	5,000-sheet Large Capacity 2-Drawer Air Feed Tray (ledger) ¹
MXMFX1	100-sheet Multi-bypass Tray (for machine)
MXMF11	500-sheet Multi-bypass Tray (for MXLC13)
MXFN21	4K Stacking 100-Sheet Staple Finisher ¹
MXFN22	4K Stacking 100-Sheet Staple/Saddle-Stitch Finisher ¹
MXST10	5,000-Sheet Stacker (includes one paper cart)
MXCA10	Paper Cart (additional)
MXRB16	Large Capacity Tray mounting kit
MXRB17	Large Capacity Tray tandem connecting kit
MXRB18	Curl Correction Unit ¹
MXRB13	Relay Unit
MXMT10	Trimmer Unit ¹
MXPN13B	3-Hole Punch Unit (for MXFN21/FN22)
MXSCX1	Staple Cartridge (for MXFN22)
MXSCX2	Staple Cartridge (for MXFN21/FN22)
MXSL10N	Status Indicator
ARSU1	Stamp Unit (requires ARSV1 Stamp Cartridge)
ARSV1	Stamp Cartridge (required for ARSU1)
MXPF10	Bar Code Font Kit
MXPU11	XPS Expansion Kit
MXPE11	Fiery Print Server
MXPX11	Fiery Interface Kit
MXEB11	Enhanced Compression Kit
MXEB15	HDD Mirroring Expansion Kit
MXFR53U	Commercial Data Security Kit (not available at time of launch)

Supplies

MX900NT	Toner Cartridge
MX900NV	Developer
MX850NR	Drum
MX850HB	Waste Toner Bottle



Design and specifications subject to change without notice. Sharp, Sharp OSA, Sharpdesk, YourSharp, and all related trademarks are trademarks or registered trademarks of Sharp Corporation and/or its affiliated companies. Windows and Windows Server are trademarks or registered trademarks of Microsoft Corporation. Adobe, PostScript 3 are trademarks or registered trademarks of Adobe Systems Inc. EFI, Fiery, Electronics For Imaging, the Fiery logo, the EFI logo, FreeForm, Spot-On, WebTools and Command WorkStation are trademarks or registered trademarks of Electronics For Imaging, Inc. All other trademarks are the property of their respective owner ©2018 Sharp Electronics of Canada Ltd.

335 Britannia Road East, Mississauga, ON L4Z 1W9
150 York Street, Suite 1702, Toronto, ON M5H 3S5
www.sharp.ca

SHARP®
Be Original.